





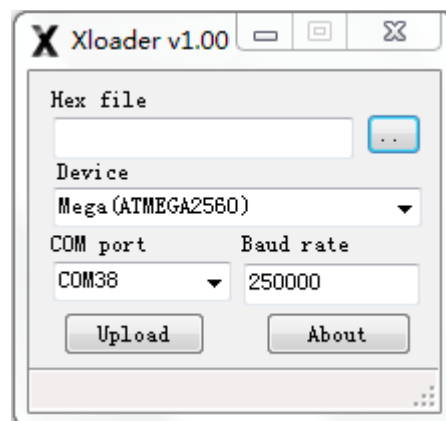


## Xloader

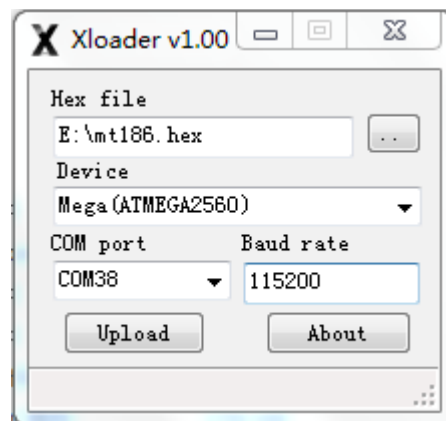
1. Extract Xloader.zip file.

	avrdude.conf	2012/3/18 16:49	CONF 文件	408 KB
	avrdude.exe	2012/3/18 16:49	应用程序	1,878 KB
	devices.txt	2015/7/28 20:20	EditPlus	1 KB
	libusb0.dll	2012/3/18 16:49	应用程序扩展	43 KB
	license.txt	2012/3/18 17:03	EditPlus	1 KB
	XLoader.exe	2012/3/18 16:44	应用程序	271 KB

2. Run Xloader.exe



3. Set according to the picture. Select firmware file. Select the correct COM port.



4. Upload and wait.

